

Chew Valley Area Forum

Thursday 9th October 2014

Agenda item 1. Welcome and introductions

Making Bath & North East Somerset an even better place to live, work & visit

Agenda item 2. Apologies

Agenda item 3. Minutes of the first inaugural meeting

Agenda item 4. Matters arising

Agenda item 5. Working arrangements and membership

Agenda item 6. Parish and Community issues

Agenda item 7. Consultation Items

Making Bath & North East Somerset an even better place to live, work & visit

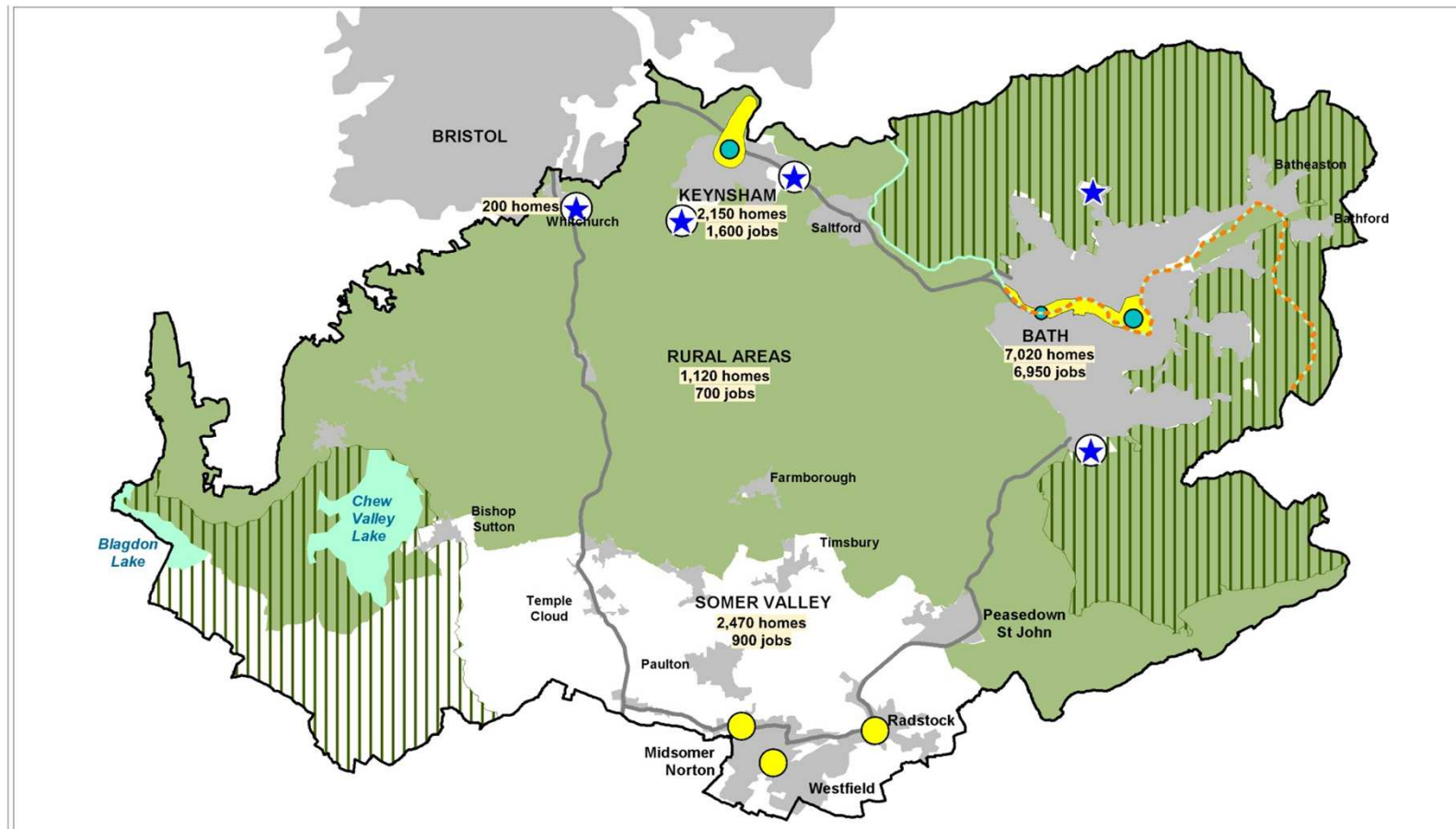
CORE STRATEGY & PLACEMAKING PLAN

Richard Daone
Planning Policy Team Leader

Core Strategy

- Adopted 10th July 2014
- Legal challenge period expired – no legal challenge
- Part of statutory Development Plan, comprising:
 - Core Strategy
 - Saved Policies from B&NES Local Plan
 - Joint Waste Core Strategy

The spatial strategy

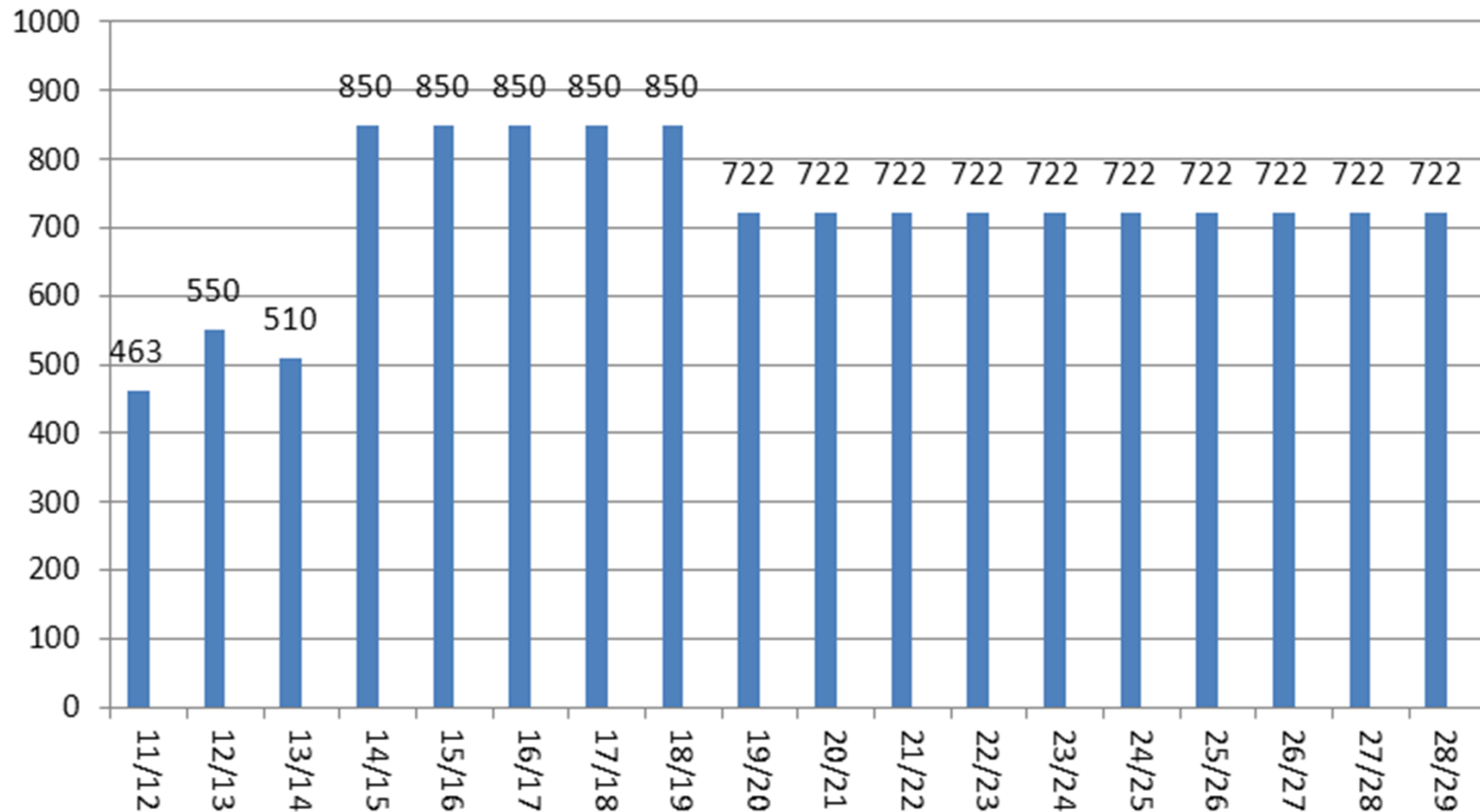


Making Bath & North East Somerset an even better place to live, work & visit

Place Based Policies

- Policy RA1: villages meeting facilities/public transport access criteria (around 50 homes)
- Policy RA2: other villages (with HDB) outside Green Belt (around 10-15 homes)
- Villages washed over by Green Belt – Policy HG.6 and NPPF

Core Strategy Housing Trajectory as at adoption



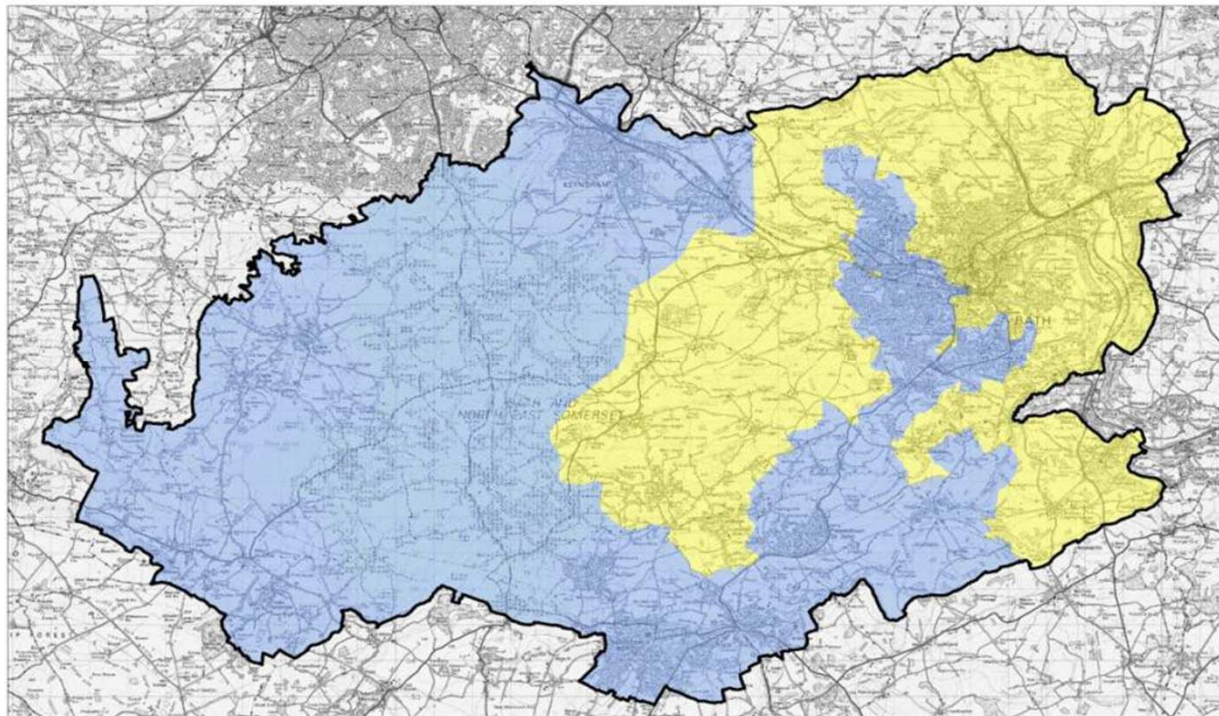
Making Bath & North East Somerset an even better place to live, work & visit

Housing applications

- More control over housing applications as we now have 5 Year Land Supply
- 13,000 housing requirement not a cap - site not needed to meet requirement cannot be sole reason for refusal (e.g. brownfield windfalls)
- RA1 villages: where 50 homes are committed – greenfield development outside HDB not needed
- Other RA1s e.g. Temple Cloud, High Littleton – large sites are needed – allocate via Placemaking Plan but no prematurity argument (NPPG)
- RA2 villages: sites outside HDB may need to be identified in Placemaking Plan – no prematurity argument
- Villages washed over by Green Belt – infill only

Affordable Housing (Policy CP9)

- Policy reflects geographic variations in viability
- Now seek AH on sites of 5-9 dwellings



Replaced LP Policies (Appendix 1)

B&NES Local Plan Policy	Topic	Replaced by Core Strategy Policy
ET.1	Employment Plan Overview	DW1 District Wide Spatial Strategy B1 Bath Spatial Strategy KE1 Keynsham Spatial Strategy SV1 Somer Valley Spatial Strategy
ET.4	Employment development at rural settlements	RA1 Development in the Villages Meeting the Listed Criteria RA2 Development in Villages Outside the Green Belt not Meeting Policy RA1 Criteria
ES.1	Renewable energy proposals	CP3 Renewable Energy
HG.1	Overall housing requirement and mix	DW1 District Wide Spatial Strategy CP10 Housing Mix
HG.4	Residential development in Bath, Keynsham, Norton Radstock and R.1 and R.2 settlements	B1 Bath Spatial Strategy KE1 Keynsham Spatial Strategy SV1 Somer Valley Spatial Strategy RA1 Development in the Villages Meeting the Listed Criteria RA2 Development in Villages Outside the Green Belt not Meeting Policy RA1 Criteria
HG.8	Affordable housing on allocated and large windfall sites	CP9 Affordable Housing
HG.9	Affordable housing on rural exception sites	RA4 Rural Exceptions Sites
HG.16	Gypsy and traveller sites	CP11 Gypsies, Travellers & Travelling Showpeople
HG.17	Purpose built student accommodation	B5 Strategic Policy for Bath's Universities
GB.1	Control of development in the Green Belt	CP8 Green Belt
BH.1	Impact of development on World Heritage Site of Bath or its setting	B4 The World Heritage Site and its Setting
S.1	Hierarchy of shopping centres	CP12 Centres and Retailing
S.2	Retail development within shopping centres	CP12 Centres and Retailing

Placemaking Plan: Scope & Purpose

- Complement Core Strategy - Part 2 of Local Plan
- Allocating sites for development – land use mix/development & design principles
- Update infrastructure requirements - align provision
- Detailed Development Management policies (review remaining B&NES LP Policies)

Programme

- Options document/consultation – Nov 2014
- Draft Plan – September 2015
- Submitted for Examination – January 2016
- Examination – March 2016
- Inspector's Report – July 2016
- Adopted – September 2016

Options Document

- Main site allocation options – test reasonable alternatives
- Development Management policies – proposed approach/options
- Feedback/consult on results of work with town & parish councils
- Public consultation
- Stakeholder involvement in preparing Draft Plan

Key Issues

- Site Allocations:
- Bath Enterprise Area
- Bath other
- Keynsham
- Somer Valley
- Rural
- DM Policy Areas e.g:
- Housing
- Retail
- Employment
- Transport
- Green Infrastructure
- Lighting
- Energy Minerals
- SUDS
- Local Food
- Renewable Energy

Sites/Policies: Rural Areas

- Successful working with parish councils
- Site allocation and local green space designation options
- RA1 and RA2 villages
- Development Management Policy Options
- Further detail in November

Questions?

Making Bath & North East Somerset an **even** better place to live, work & visit

Agenda item 8. What are our priorities

Making Bath & North East Somerset an even better place to live, work & visit

Priorities for the local Forum

Aim: To create an Area Profile and Action plan for the Chew Valley Forum.

- What is the data telling us?
- What is the community saying?
- Where are the gaps?
- What should the priorities be?

What is the data telling us?

Key facts and figures

- There are 9,974 residents
- 22% are under 18, 2% full time students, 22% over 65
- 2.1% increase in population since 2001
- 29% economically inactive, of which 18% are retired, higher than the national average
- 5.8% of lives “limited a lot” by a disability
- 120 employment & support allowance claimants



What is the data telling us?

Key facts and figures

- 38% of people have a degree or above – higher than national average (27%)
- 18% of people have no qualifications – lower than national average (23%)
- 1 in 4 children are aged between 5 and 6 years
- 3 in 10 children aged 10 and 11 are overweight or obese
- There is very little deprivation in the Chew Valley – all wards are within the least deprived 30% nationally
- Chew Valley South Ward falls within the least deprived 10% nationally
- Child poverty (5%) is low compared to the UK (27%)

What the community are saying?

Key issues highlighted

- Traffic, access and public transport
- Children & Young people
- Developments and Infrastructure
- Economic Development & Enterprise
- Environmental Sustainability and Climate Change
- Health & Wellbeing
- Stronger Communities
- Safer Communities

Where are the gaps?

What is missing from the data and key issues?

- Access to rural services – deprivation figures don't reflect the local situation
- Ageing population – latest census shows increase by 42% of people aged 75+ (Chew Valley South Ward)
- Need a full analysis of health related issues
- Need comparisons between Wards and other Forum areas to highlight particular issues
- Transport and movement – not sure what information is currently held?
- Employment and business – are there issues around skills, business support?
- Other local information and knowledge should be included – Village Agents, Community transport, what else?

Are we meeting the needs?

Should the Forum's priorities be....

- Access to services
 - thinking rural and delivering within a rural setting?
 - focus should be on older and vulnerable people's services?
 - Health and wellbeing services for all ages?
- Traffic, access and public transport
 - Access for health related issues?
 - Access to school and work?
 - Access for leisure?

Priorities for the local Forum

Group discussion

- What is missing from the data?
- Are there further issues from the community that need highlighting?
- Are the priorities right?
- Do we need to do more work before we agree the priorities?

Next Steps

Aim – draft Area Profile and action planning – Feb 2015

Options:

- Set up a working party to bring this work together
- Give Chair and Vice Chair responsibility to take this forward and liaise with Stronger team
- Stronger team undertake work and report back once profile is complete.

Agenda item 8. Standing items

Agenda item 8. Standing items – Community safety report

**Agenda item 8.
Standing items – Health issues
– Your Health, Your Say**

Agenda item 10. Any other business

Agenda item 11. Dates of future meetings

**Thursday 20th November 2014
Thursday 12th February**

**Venue: The Wellsway, West Harptree
Time: 6.30pm**

The End

Making Bath & North East Somerset an even better place to live, work & visit